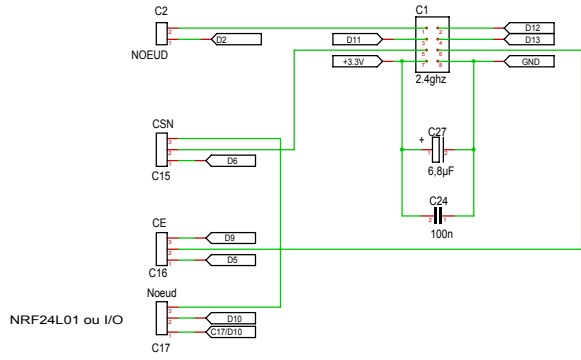
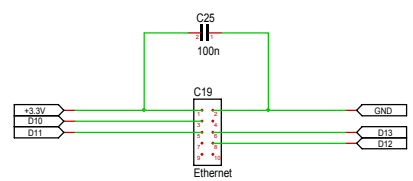


NRF24L01

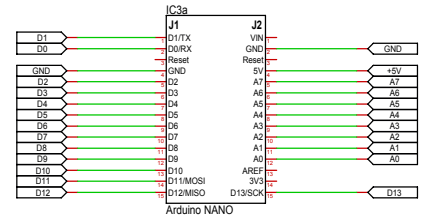


NRF24L01 ou I/O

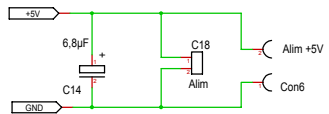
Ethernet



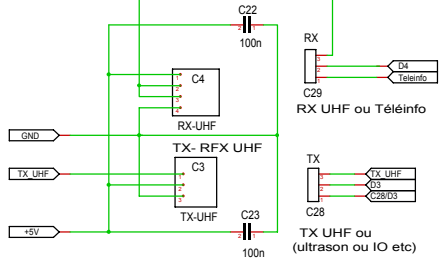
ARDUINO NANO



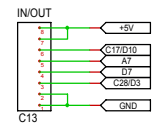
Alimentation



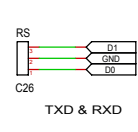
RX TX - UHF



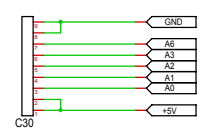
Inputs / outputs 5 (I/O)



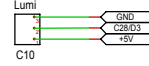
Port série



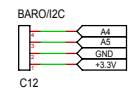
Entrées analogiques



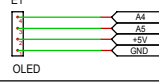
Luminosité



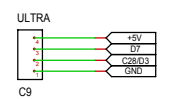
Baromètre



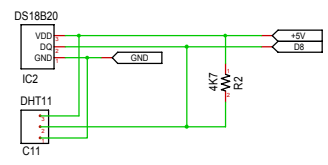
Ecran OLED



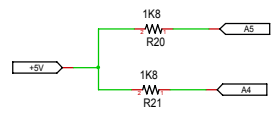
Ultrason



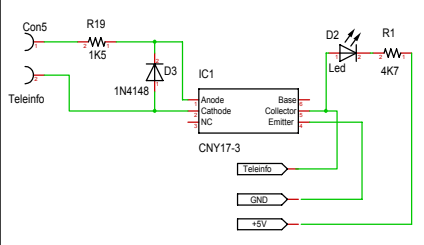
Température humidité



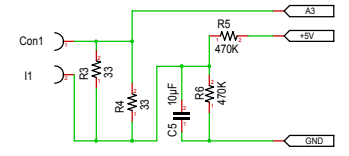
I2C



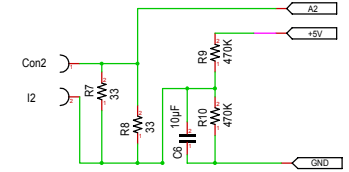
Télé-information



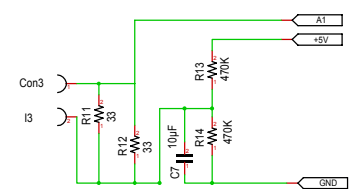
Mesure courant 1



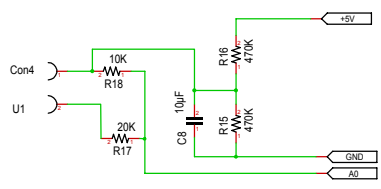
Mesure courant 2



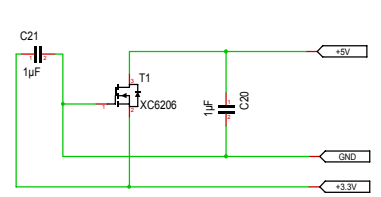
Mesure courant 3



Mesure tension 1



Régulateur 3V3



Échelle	57.63%	OF	Dessinateur	Feuille
Modification	12.02.16	13:52	Titre	MyRFX
Édition	13-02-16	16:32	Fichier	Mysensos PCB 2.5 schéma.T3001
			Projet	